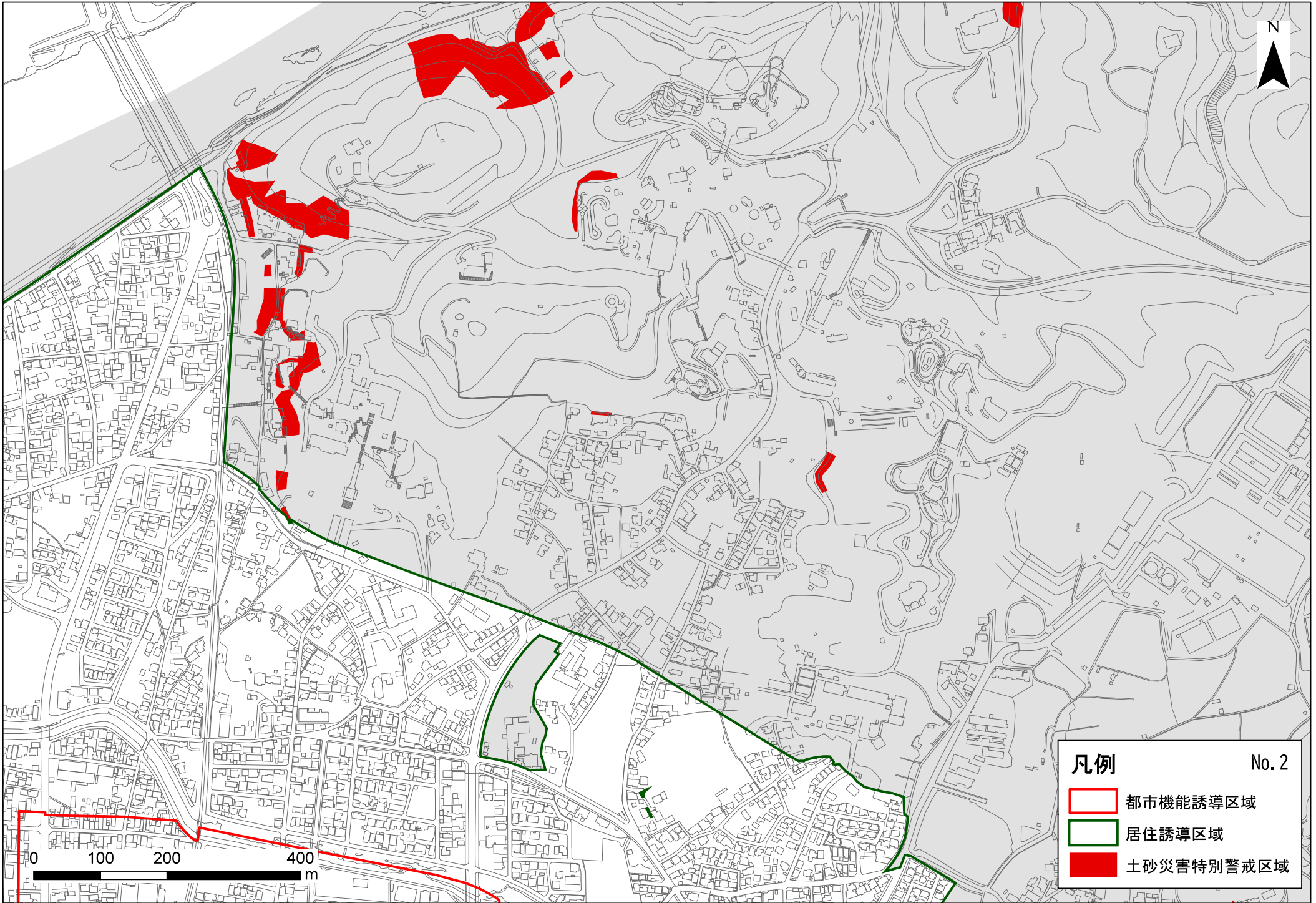


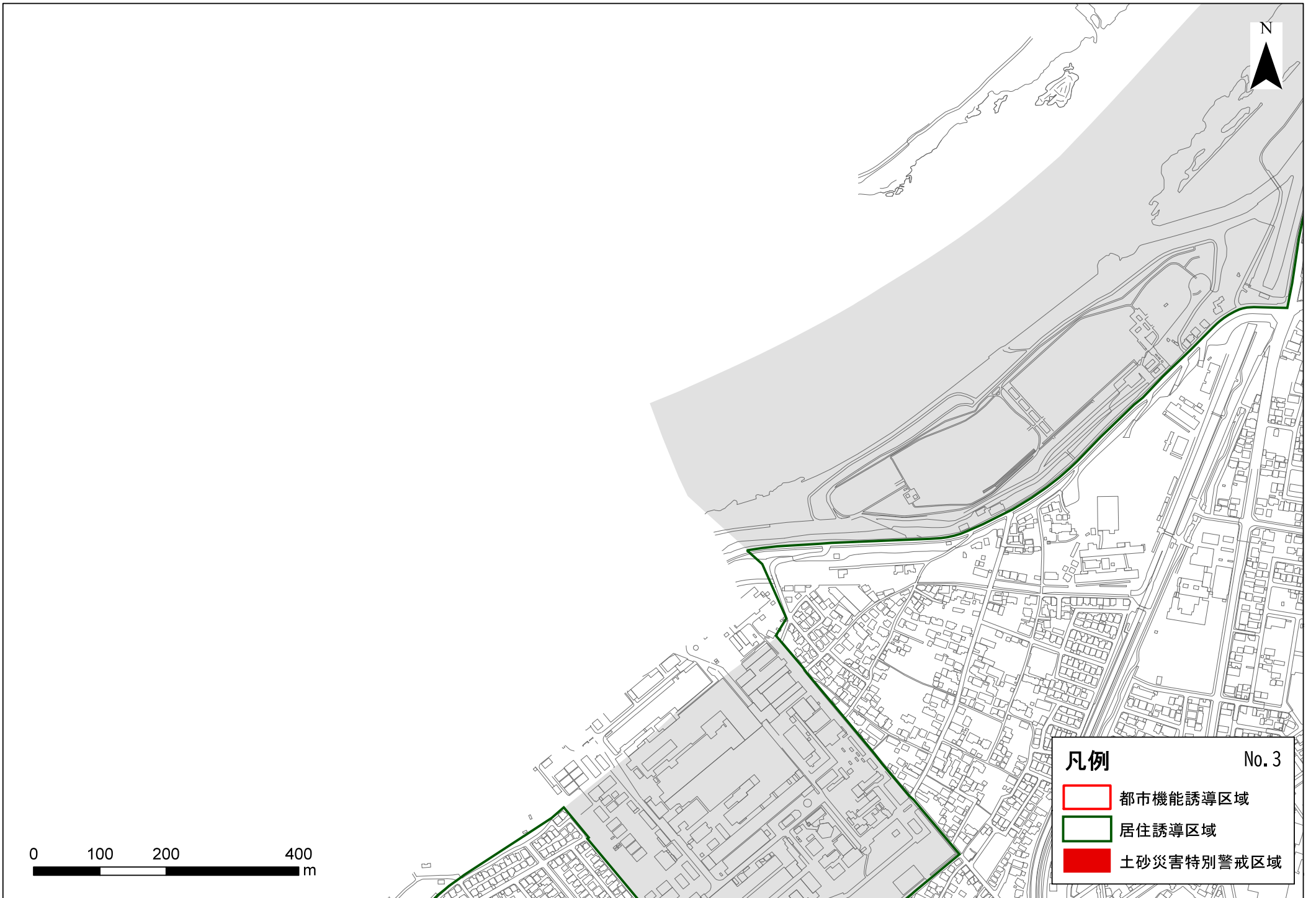
凡例 No. 1

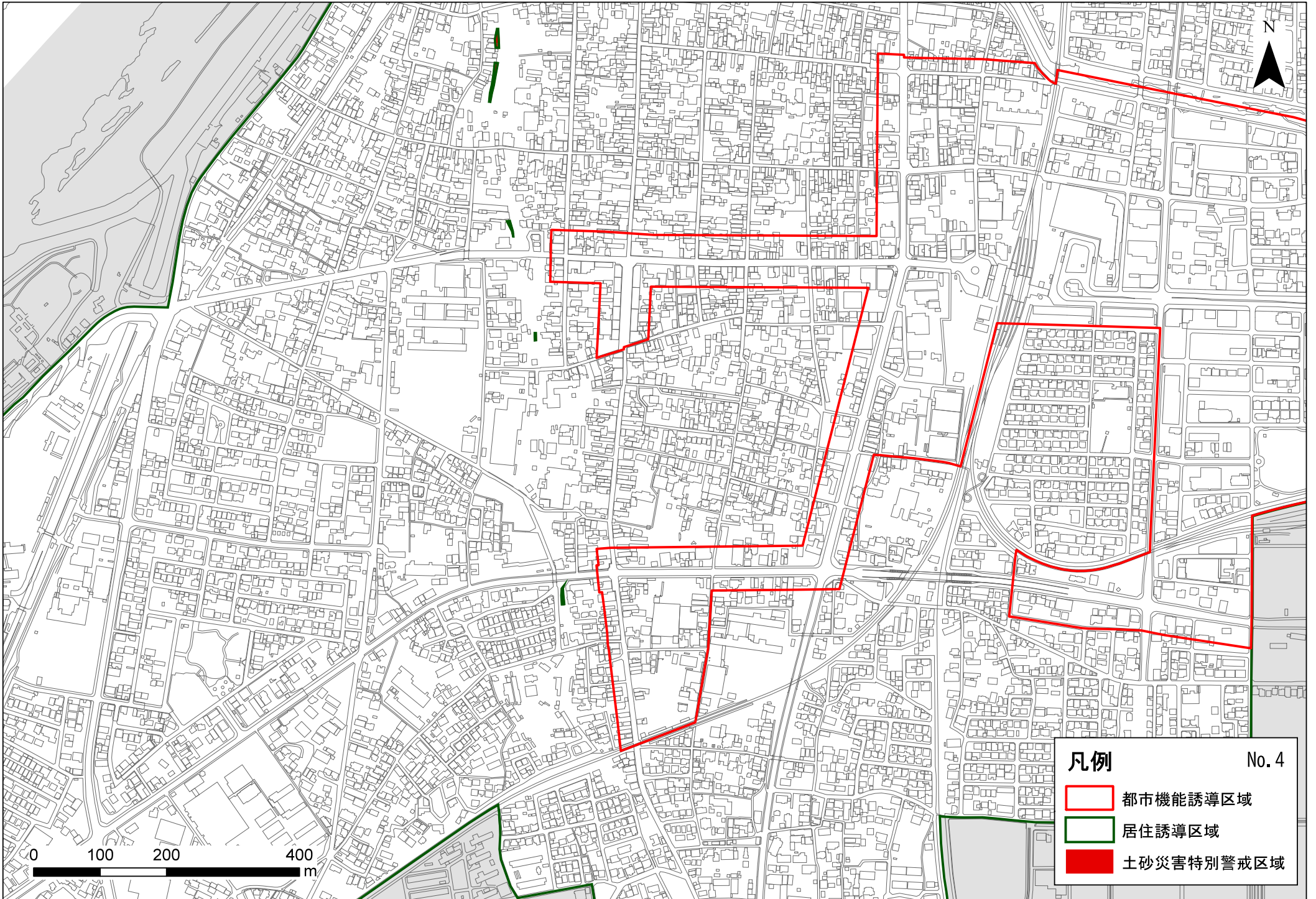
- 都市機能誘導区域
- 居住誘導区域
- 土砂災害特別警戒区域

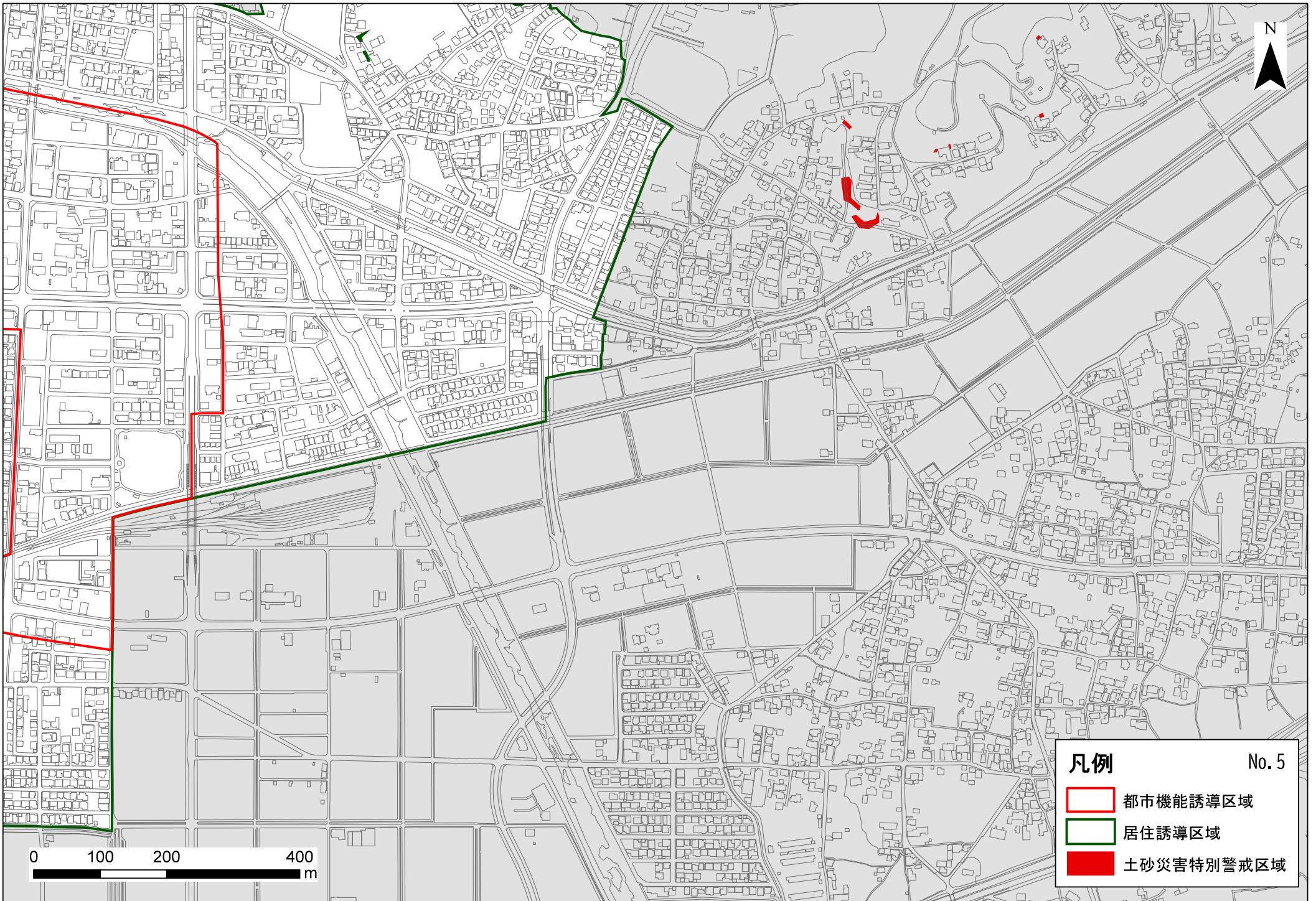


凡例 No.2

- 都市機能誘導区域
- 居住誘導区域
- 土砂災害特別警戒区域

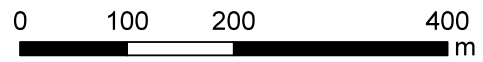
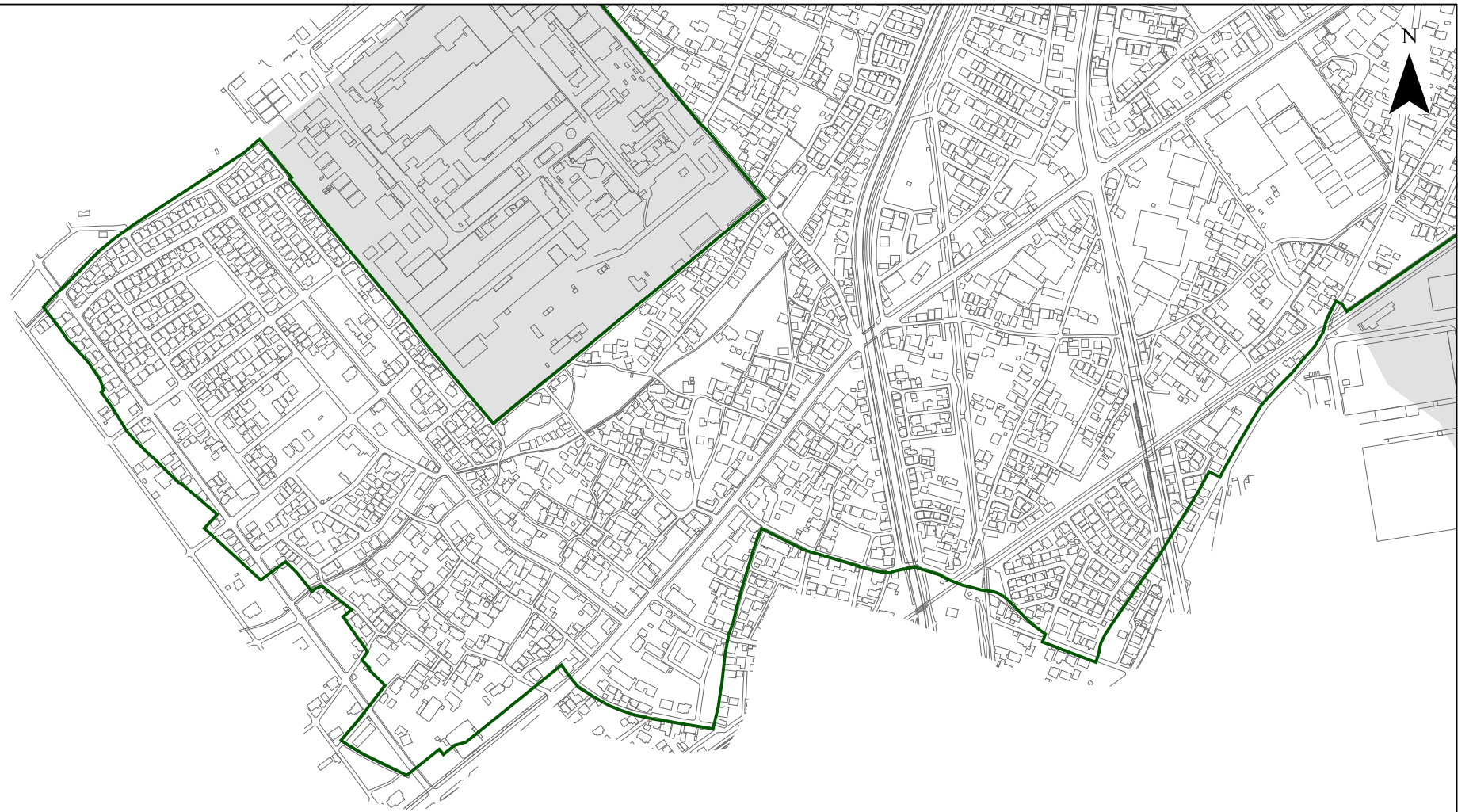









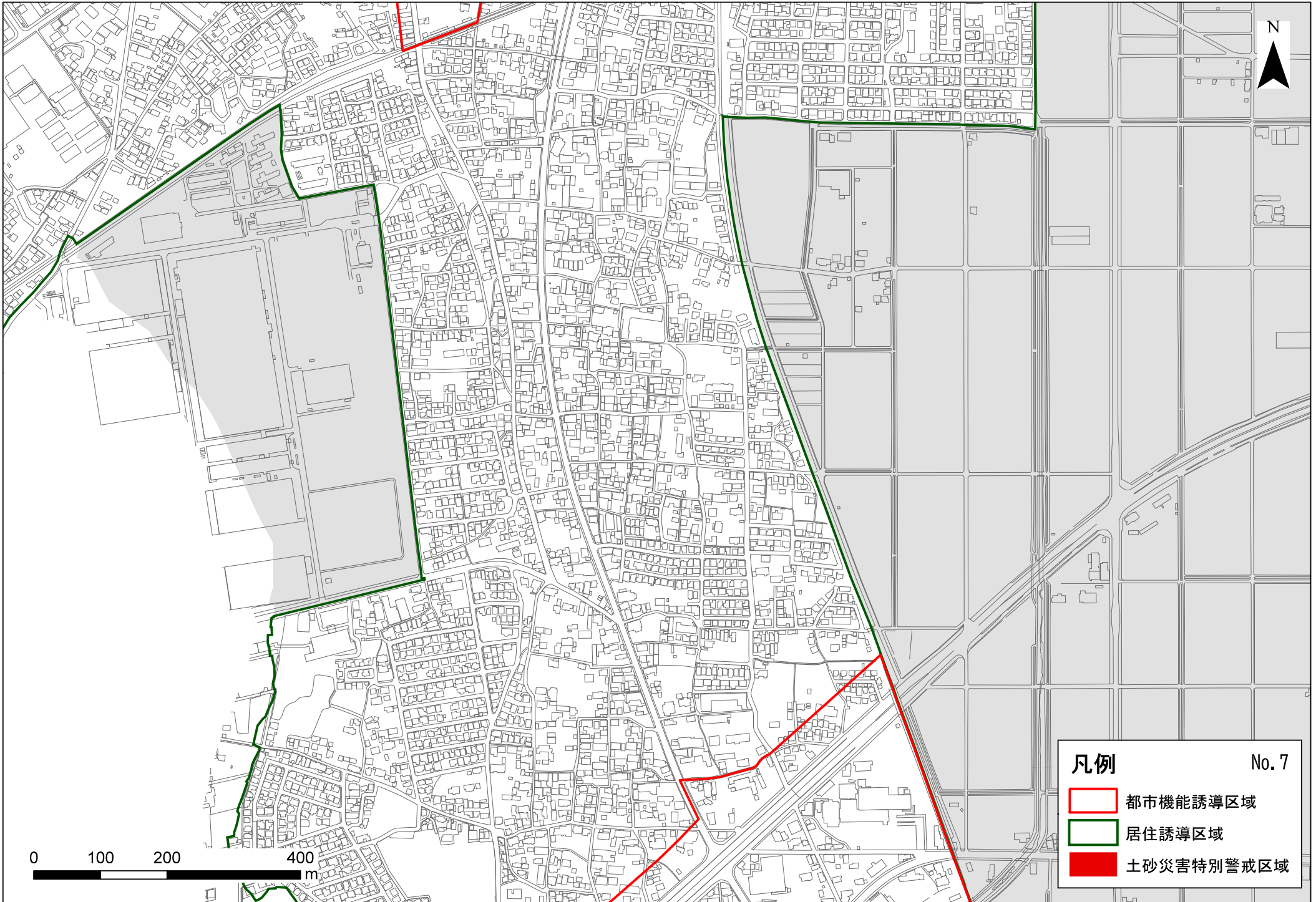
凡例 No. 5

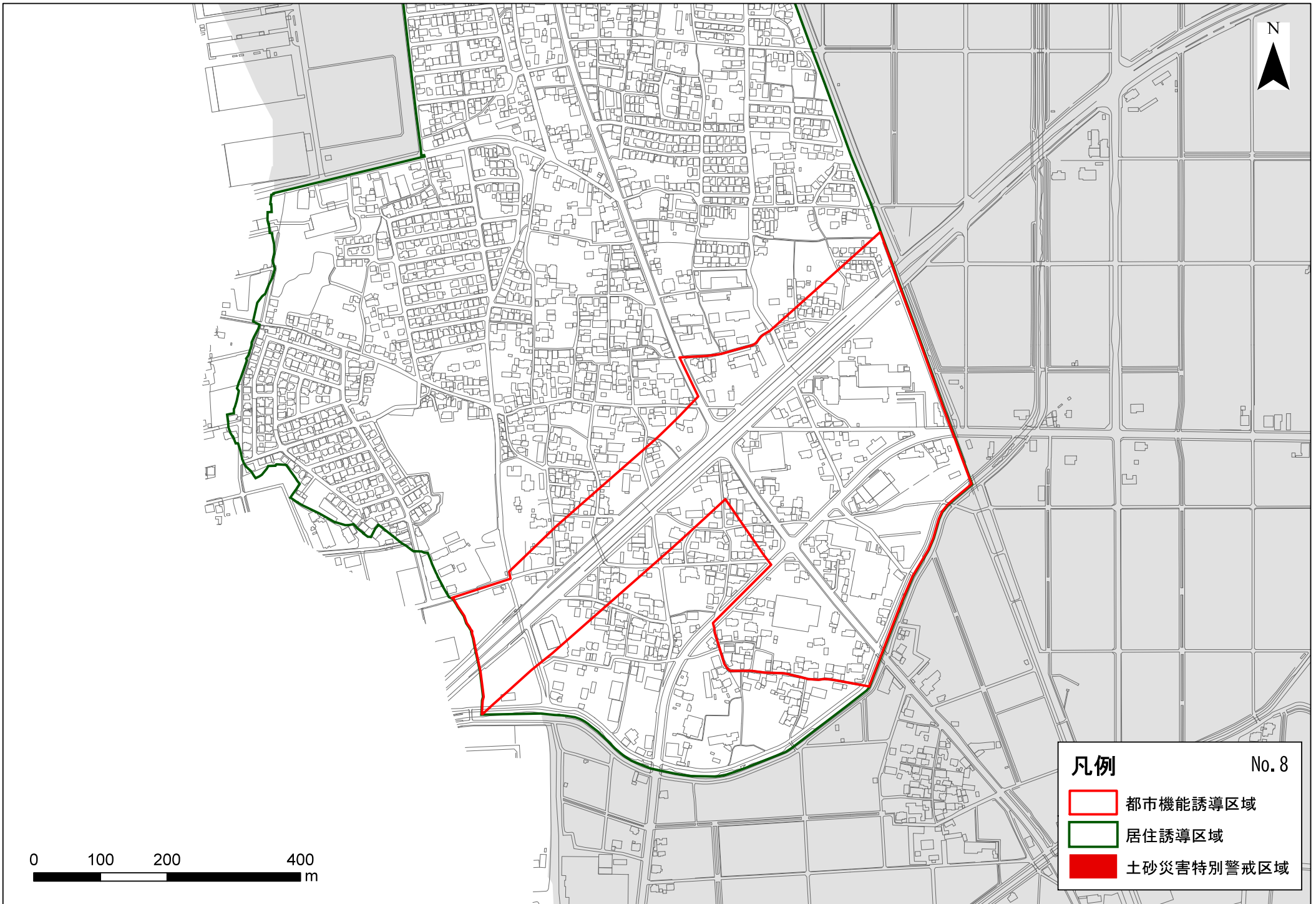
- 都市機能誘導区域
- 居住誘導区域
- 土砂災害特別警戒区域

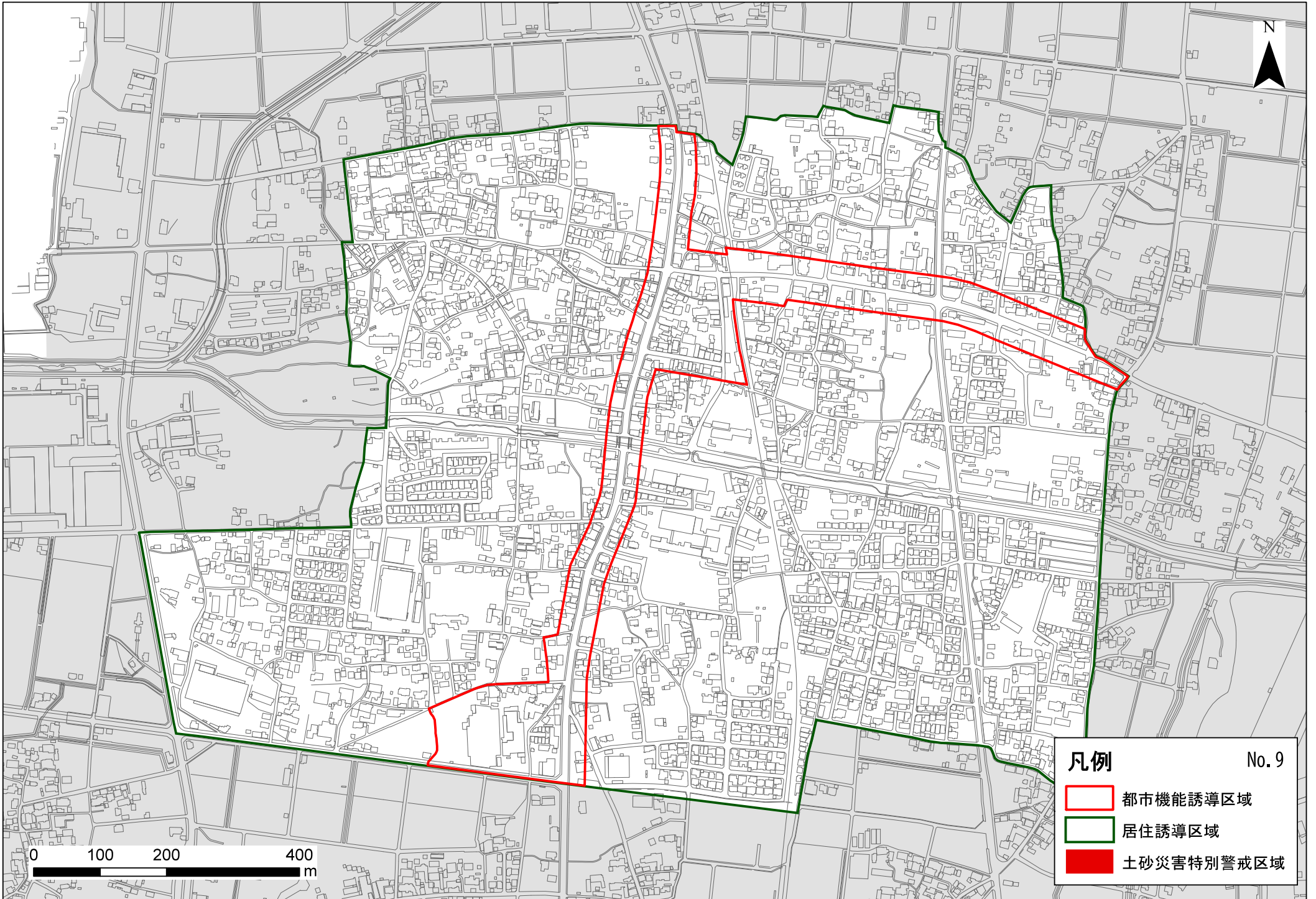


凡例 No. 6

-  都市機能誘導区域
-  居住誘導区域
-  土砂災害特別警戒区域

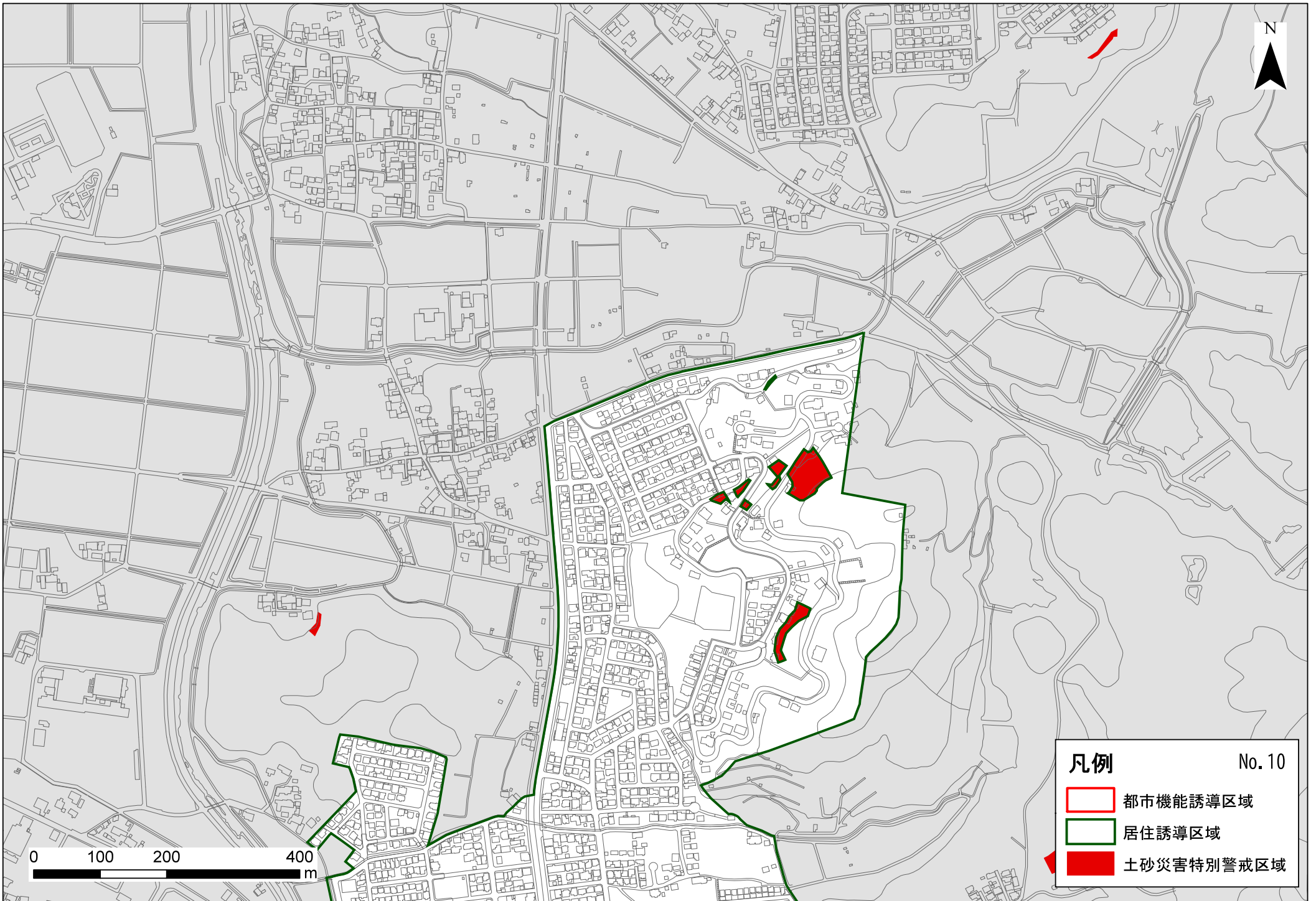


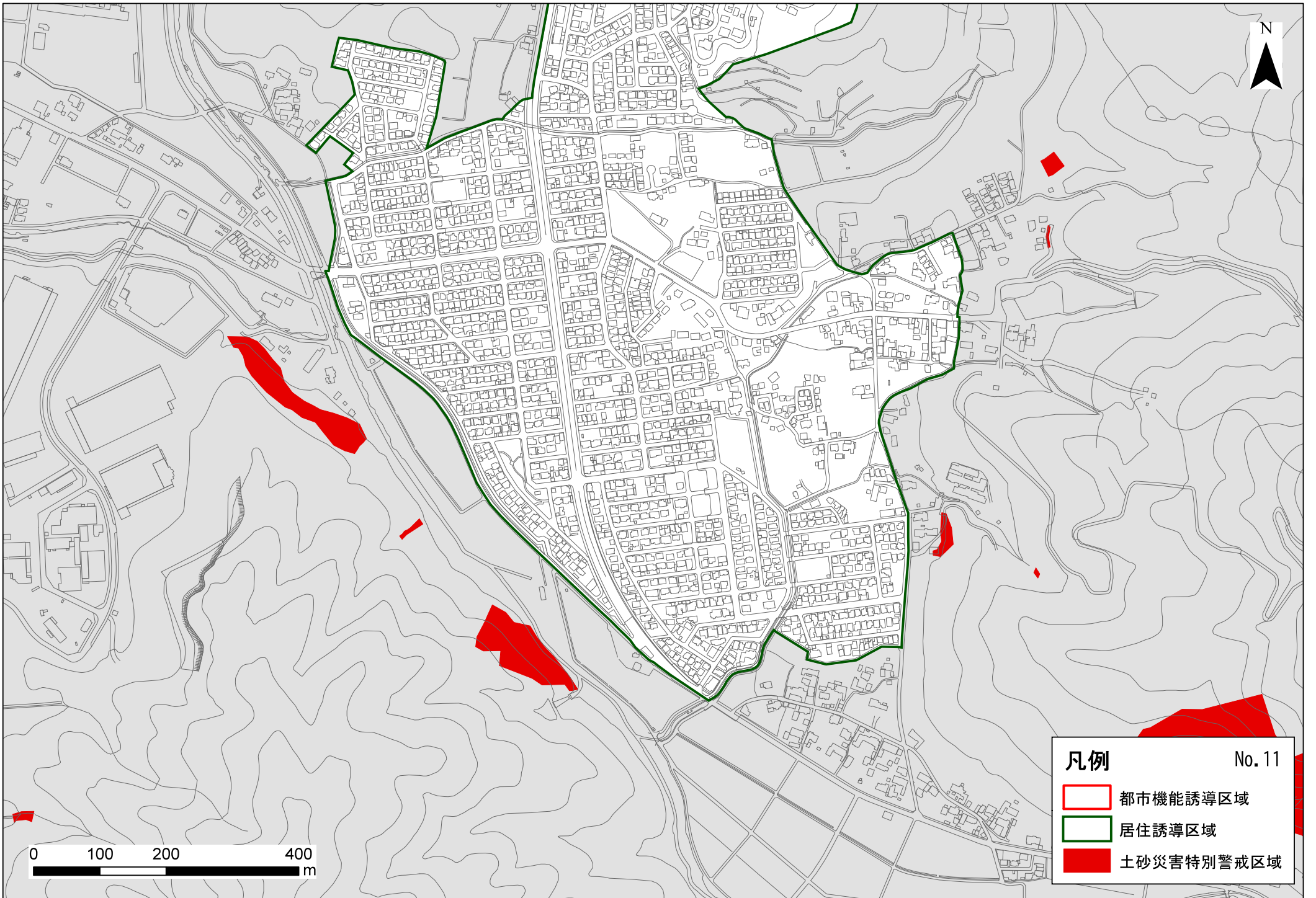




凡例 No. 9

- 都市機能誘導区域
- 居住誘導区域
- 土砂災害特別警戒区域

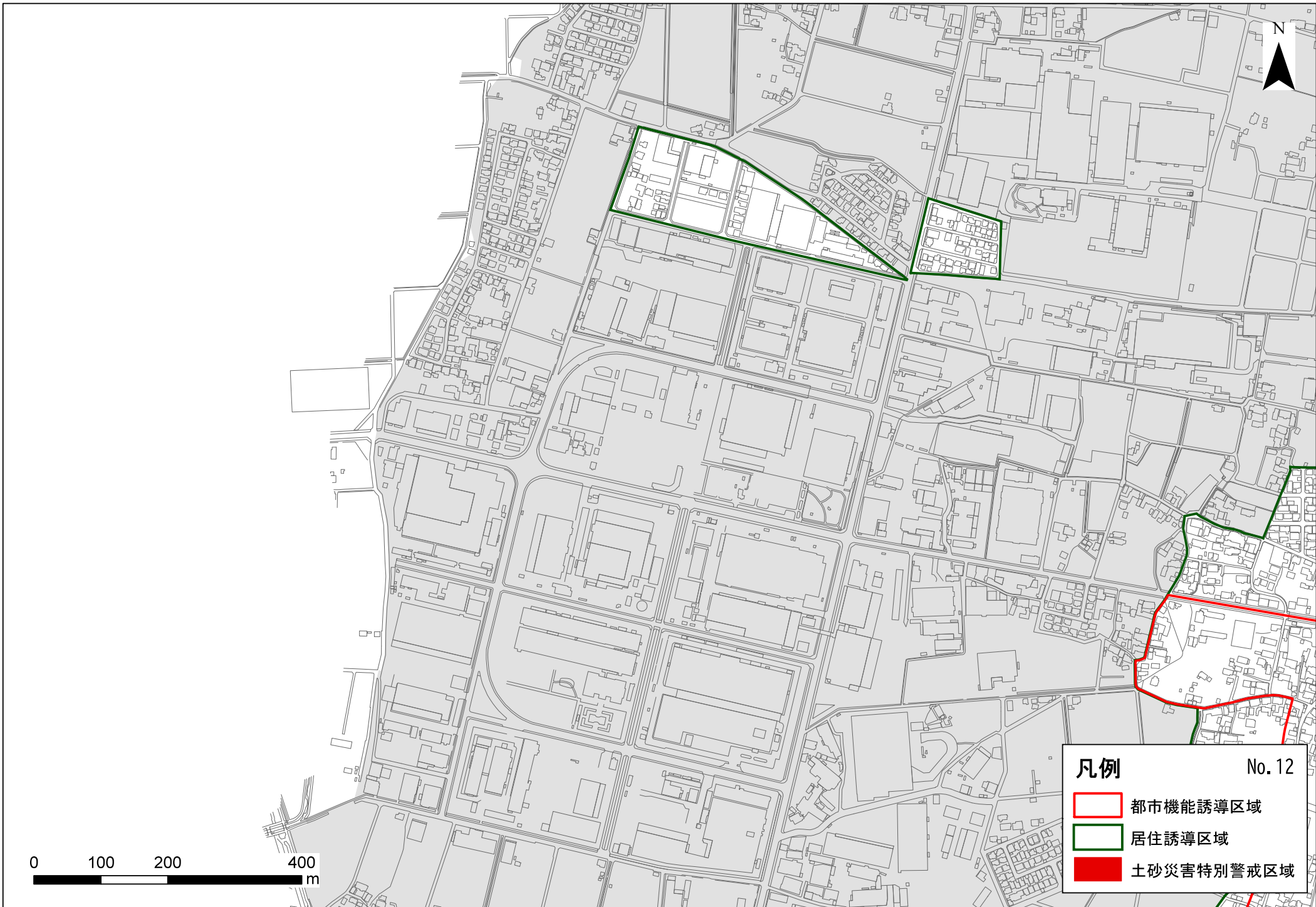




凡例 No. 11

- 都市機能誘導区域
- 居住誘導区域
- 土砂災害特別警戒区域

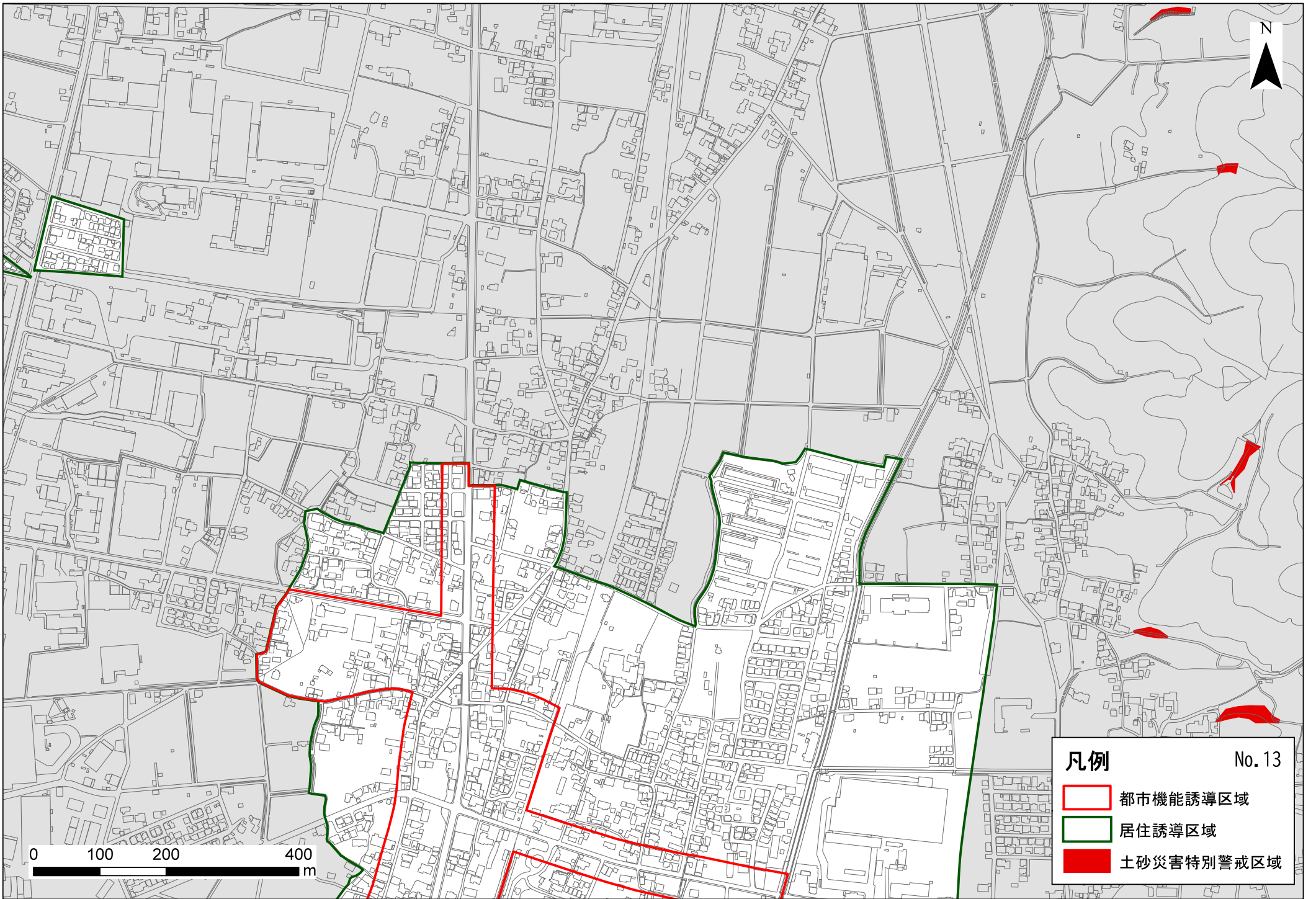
0 100 200 400
m



凡例

No.12

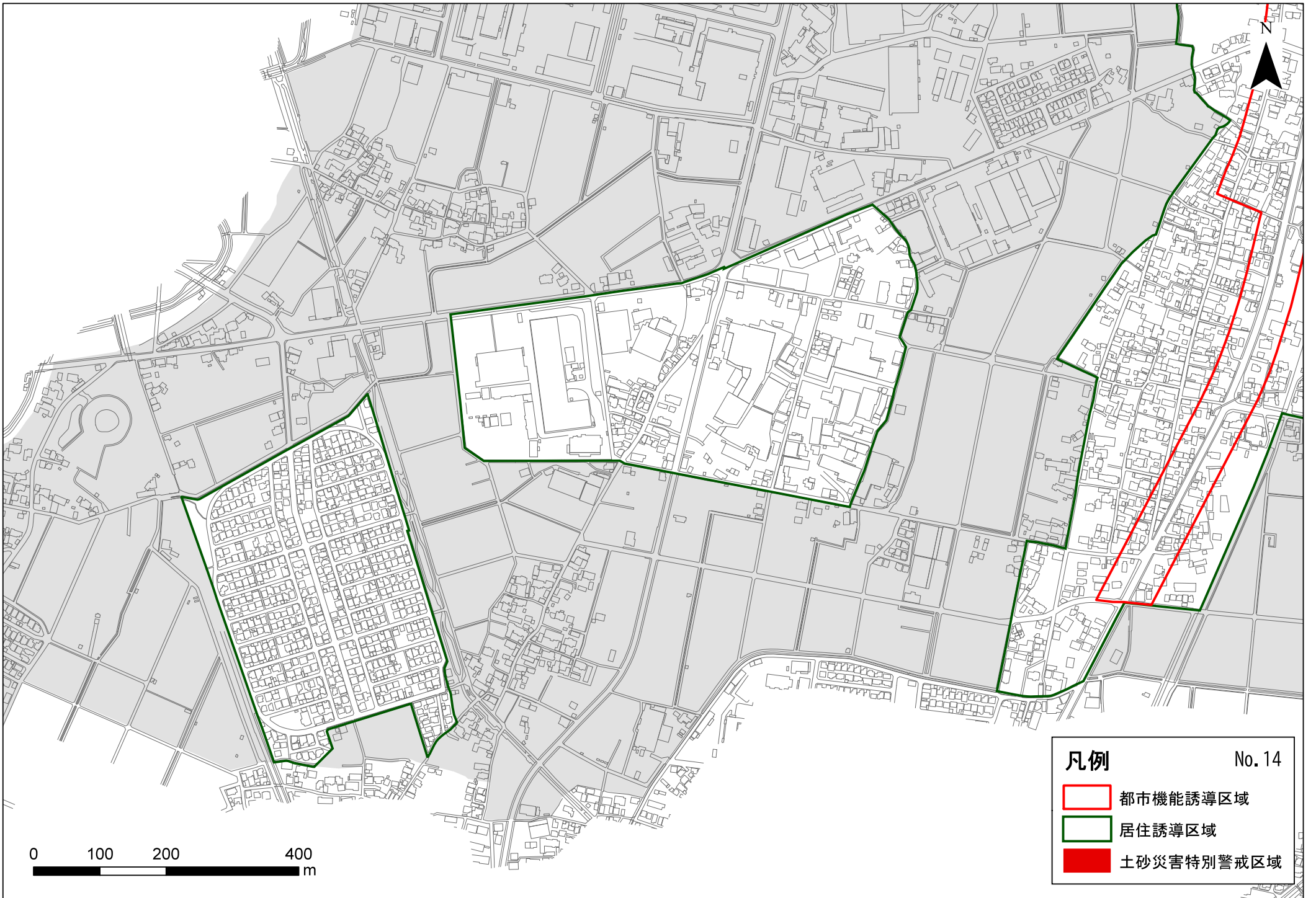
- 都市機能誘導区域
- 居住誘導区域
- 土砂災害特別警戒区域



凡例




No. 13

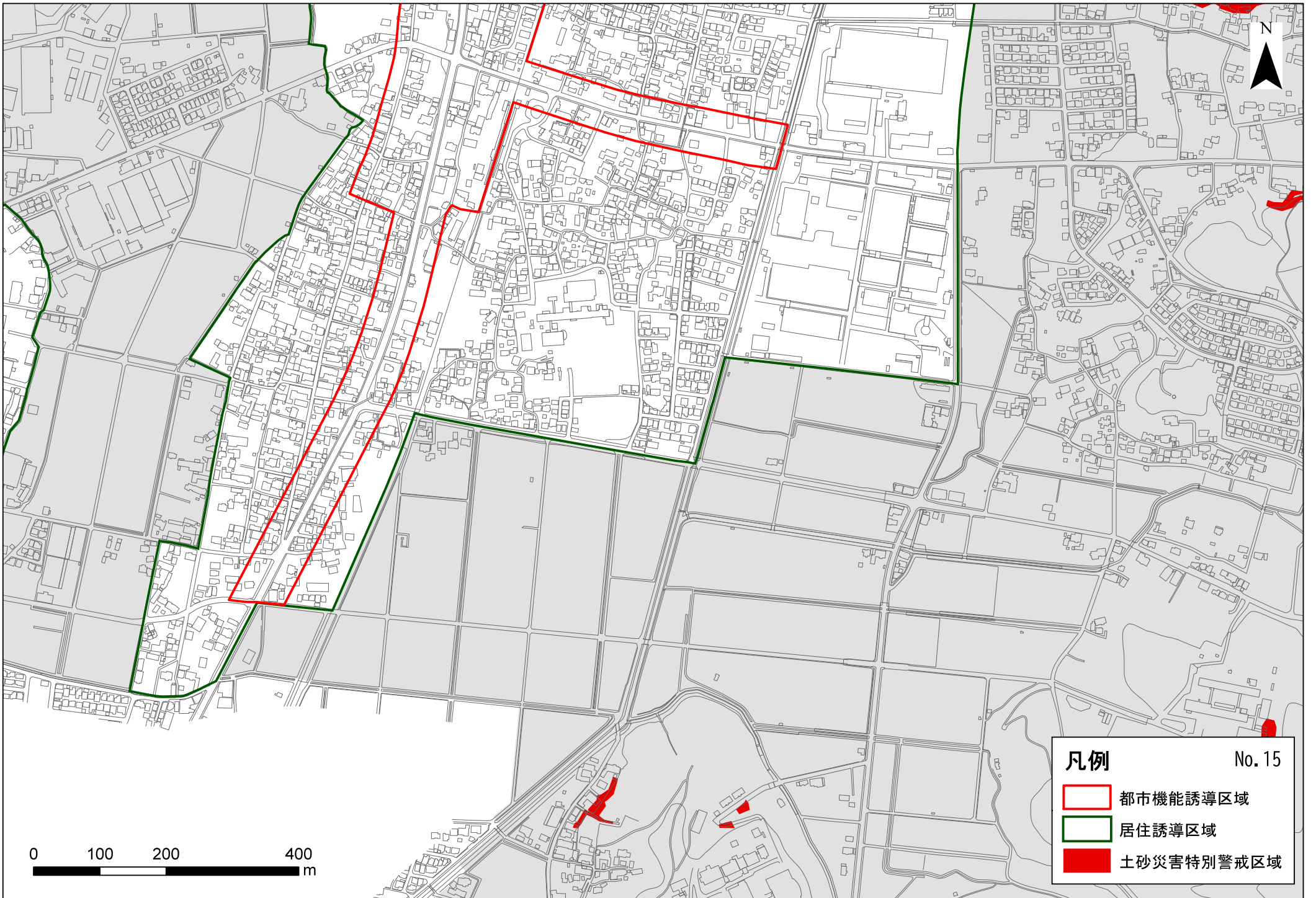
- 都市機能誘導区域
- 居住誘導区域
- 土砂災害特別警戒区域



凡例

No. 14

-  都市機能誘導区域
-  居住誘導区域
-  土砂災害特別警戒区域



凡例

No. 15

- 都市機能誘導区域
- 居住誘導区域
- 土砂災害特別警戒区域