

The Former Horibe Residence sits to the east of the Masugata Gateway to Inuyama Castle on the castle's outer moat. It is on the former Nagoya Highway, what used to be the main thoroughfare from Inuyama to Nagoya.

The major features are the main house, high walls, an attached annex, a connecting corridor, a storehouse, and a workhouse, each of which is a Registered Tangible Cultural Property of Japan. The architectural style of the house and the overall layout illustrate the samurai house style of the time.

Like farming family homes, the main house was placed in the northernmost position. To the south however, is an inner garden, whereas a farming home would have a work space.

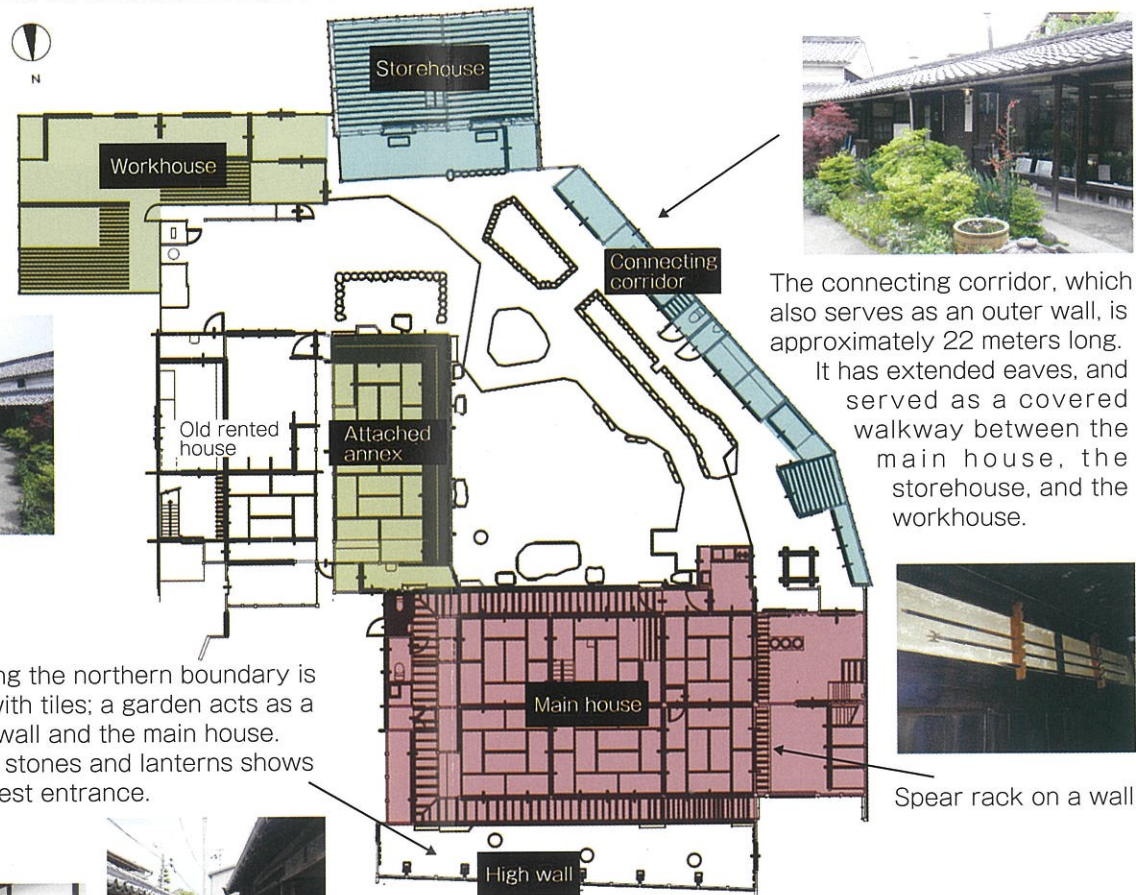


Facing the road along the northern boundary is a high wall topped with tiles; a garden acts as a buffer between the wall and the main house. The use of stepping stones and lanterns shows that this was the guest entrance.



Characteristics of the residence

- Had walls around the grounds, and a front garden
- Had covered corridors along the outside of rooms
- Had a slightly different design for each room to give each space a feeling of rank or hierarchy



The connecting corridor, which also serves as an outer wall, is approximately 22 meters long. It has extended eaves, and served as a covered walkway between the main house, the storehouse, and the workhouse.

Spear rack on a wall

- Built in 1883
 - Built in 1893
 - Built in the late 19th century to the early 20th century
- Registered Tangible Cultural Properties: Main house, attached annex, connecting corridor, storehouse, workhouse, high wall

Transport & Access

By train : Approx. 25 mins on the rapid express from Nagoya Sta. to Inuyama Sta. by Meitetsu railway

On foot : Approx. 10 mins walk from Meitetsu Inuyama Sta.

By road : Approx. 25 mins drive from Komaki Interchange

Parking : Not available

We recommend using public transport. Those coming by car should use Castle Parking (coach parking available).

■ Location : 272 Minamikoken, Inuyama, Inuyama City, Aichi 484-0084

■ Hours : noon–6:00 p.m.

Available by arrangement during the morning

■ Closed : · Mondays & Tuesdays (or the following day if either is a national holiday)

· From December 28 to January 4

■ Admission : Free

■ Phone : 0568-90-3744

Administration & Operation

Specified Nonprofit Organization

Kodai Niwa no Sato Bunka Isan Network

<http://niwasoto.net/home>



Registered Tangible Cultural Property of Japan Former Horibe Residence

